



# **PIPE HANGERS & SUPPORTS**

**A Showcase of Pipe Hangers  
and Support Products of 2024**



**ENGINEERED FOR EFFICIENCY  
BUILT TO LAST!**

# INDEX

**3**

Company Profile

**5**

Quality

**6**

Products Range

**10**

Ordering Tempelates

# COMPANY PROFILE

Over 25 years of serving Power generation, Petroleum, Nuclear, Process, Oil & gas, Offshore, Water & HVAC industries worldwide.



## History:

The plant is Incorporated in the year 1984 under the name and style of Myricks Piping Systems (P) Ltd to manufacture state of the art Pipe Hanger & supports equipment in India with technology from Support Technology & Products UK.

In the year 2000, we signed a joint venture agreement with Pipe Supports Group UK to manufacture the "Pipe Supports" range of hangers & supports and upgraded to the latest technology. The company was renamed Pipe Supports India (P) Ltd.

The joint venture came to an end in Jan 2010 having completed its stipulated 10 year term and the technology was fully absorbed.

## Present:

The renamed factory, 'Pipe Hangers & Supports (P) Ltd - PHSPL' was incorporated in January 2010 with its unique brand identity. We are enhancing the technology and introducing new products in the near future.

We use state of the art technology, modern manufacturing methods, latest software, computer systems, CNC machines etc. to deliver a competitive, cost-effective high-quality product.

We are highly focused on timely delivery and on time response to client requirements. We provide after sales support including responding to site emergencies during erection and commissioning.

## RESOURCES

Pipe Hangers & Supports operates out of two locations, one at Chennai & the other at Thanjavur, Tamil Nadu (about 30 kms from BHEL - Trichy).

Our dedicated team is associated with various activities like sales, marketing, manufacturing, purchase, production, production planning, contract management, accounts, quality, maintenance, etc.



Pipe Hangers & Supports Private Limited - Chennai (Land - 80,000 Sq ft & covered shed 30,000 Sq ft)



Pipe Hangers & Supports Private Limited - Thanjavur (Land - 112,500 Sq ft & covered shed 40,000 Sq ft)

**We have a modern manufacturing facility with latest machines & manufacturing processes.**

**A Global Solution to Spring Hangers & Supports**

A leading manufacturer of spring hangers, supports & accessories. Over the past 36 years we have supplied to major power plants, refineries, nuclear installations & process industries in India & several International projects.



# QUALITY

## QUALITY CONTROL

We have a fully staffed Quality Control department responsible for the Quality of the finished product confirming to domestic and international standards.

### **Manufacturing Standards commonly used:**

- Quality Control Manual
- BS3974 - Specification for Pipe Supports
- MSS-SP69 - Pipe Hangers and Supports, and steel fabrication
- MSS-SP89
- ANSI - B31.1 - Power Piping
- ANSI - B31.3 - Petroleum Refinery Piping

## DOCUMENTATION

Pipe Hangers & Supports has setup a full-fledged documentation center with the latest scanners, photocopiers etc., for producing final documentation to third party inspectors, consultants and clients. The market has moved to an electronic format with more clients requesting CDs in place of hardcopies. This helps to protect & save our environment.

## QUALITY ASSURANCE

PHSPL employs a highly skilled team of designers, engineers, production, and marketing experts within an ISO 9001:2008 quality framework.

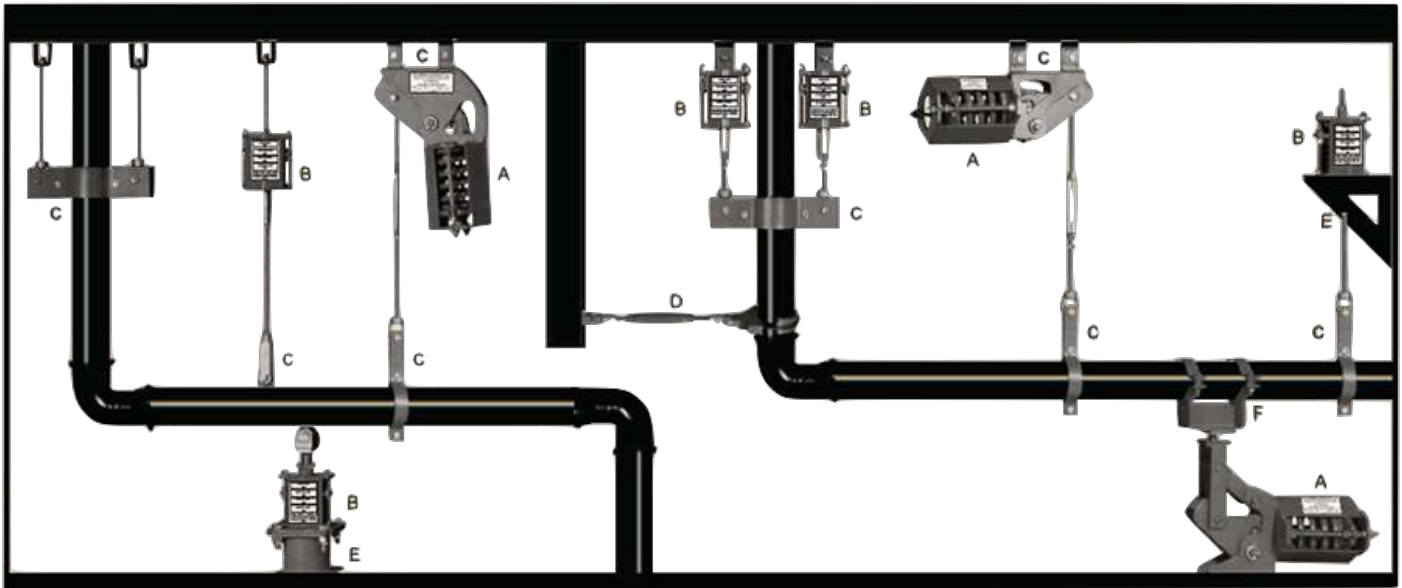
Our offices and production facilities adhere to strict safety practices and procedures, and strive for continuous improvement, which is driven by the following Key Performance Indicators:

- Customer Satisfaction
- Supplier Assessment
- Delivery Performance
- Quality Performance

On-going training, multi-skilling, and co-operation are also actively encouraged.



# PRODUCTS RANGE



**A. CONSTANT HANGERS & SUPPORTS**

**B. VARIABLE HANGERS & SUPPORTS**

**C. PIPE CLAMPS**

**D. RIGID STRUT**

**E. STRUCTURALS**

**F. PIPE BASE WITH SLIDE BEARINGS**

## A. CONSTANT HANGERS & SUPPORTS

The Constant load hanger uses the Bell Crank Lever & helical spring mechanism to provide a constant supporting force over its entire travel range.

Frame sizes 1 to 8 provide a max supporting force of 35,000 kgs with total movements up to 750mm.



## B. VARIABLE HANGERS & SUPPORTS

The current range of variable supports are designed to function in shrinking space envelopes peculiar to oil rigs, conventional & combined cycle power plants, refineries & nuclear industry.

The arrangement allows the units to be finished with a variety of surface protection coating like zinc silicate, epoxy paints, hot dip galvanizing etc., allowing final assembly without any damage to protective surface finishes.



The available travel ranges are 35mm, 70 mm, 140 mm, 210 mm & 280mm with supporting forces ranging from 3 kgs to 24000 kgs.

For very heavy loads a new range "High Load Variables" have been introduced for supporting up to 40,000 kgs per support point.

## C. PIPE CLAMPS

Pipe clamps, or Piping clamps, are best defined as the support mechanism for suspended pipes, whether that be horizontal overhead or vertical, adjacent to a surface. They are vital in ensuring all pipes are fixed securely while also allowing for any pipe movement or expansion that may occur.

Pipe clamps come in many variations as the requirements for pipe fixing can range from simple anchoring in place, to more complex scenarios involving pipe movement or heavy loads. It is essential that the right pipe clamp is used to ensure the integrity of the installation. Pipe fixing failure can cause significant and costly damage to a building so it is important to get it right.



## D. RIGID STRUTS

Pipe work can be subjected to transient dynamic loadings when external forces such as safety relief valve blow out, seismic events occur, water hammer, 2 phase flow etc. act on the pipe.

This will manifest as uncontrolled vibrations which can seriously damage pipe work. This can be prevented by use of Rigid Struts & Shock Absorbers.

Pipe work subjected to dynamic forces and vibration needs to be supported using rigid struts which act in both directions rather than hanger rods which support only downward acting loads. Rigid struts can be used in combination to act like a restraint in 1 or multiple axes.



RIGID STRUT



END ATTACHMENT  
FOR RIGID STRUT



## E. STRUCTURALS

Structural supports are a type of supports used in piping that doesn't take a direct load of pipe but transfer all load of pipes to adjacent structural or civil members. This Support is made from steel structural members like Angle, Channel, Beam, and Plate as per support location requirement.



## F. PIPE BASE WITH SLIDE BEARINGS

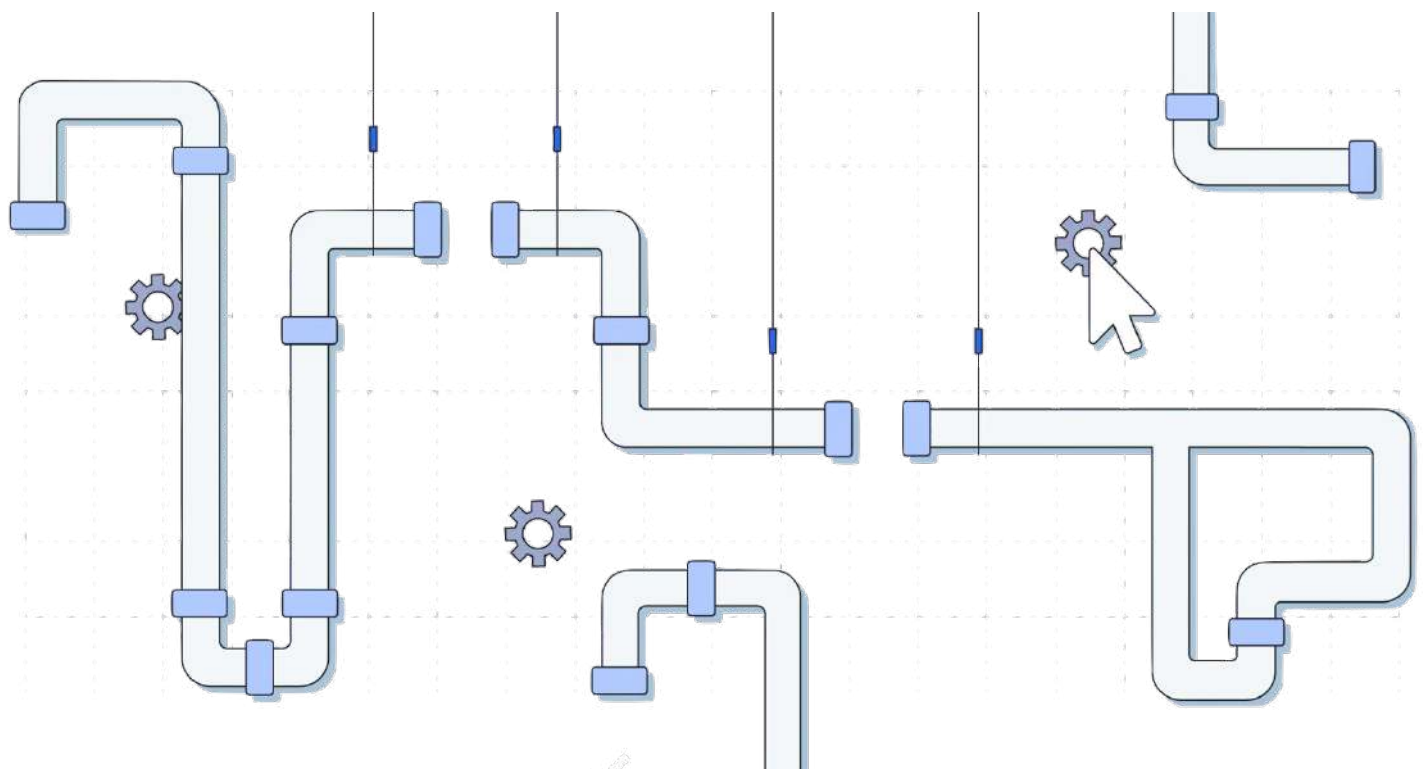
When pipe lines / structures are subjected to heat by external means due to difference in day & night temperatures or due to weather changes or due to temperatures of fluids carried in them as in the case of pipe lines, they will expand and contract by an amount decided by the geometry / shape and co-eff of thermal expansion of the material used in building them.



By not allowing them to expand and contract freely, severe stresses get induced leading to failures or over loadings.

A sensible & cost-effective way of accommodating such expansion is to allow one item to move with respect to another — and this can be achieved by using low friction slide bearings to separate the expanding item from the supporting structure.

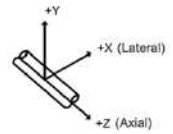
It is imperative that slide bearings are designed to keep frictional force to a minimum, to prevent the development of high loads and stresses.



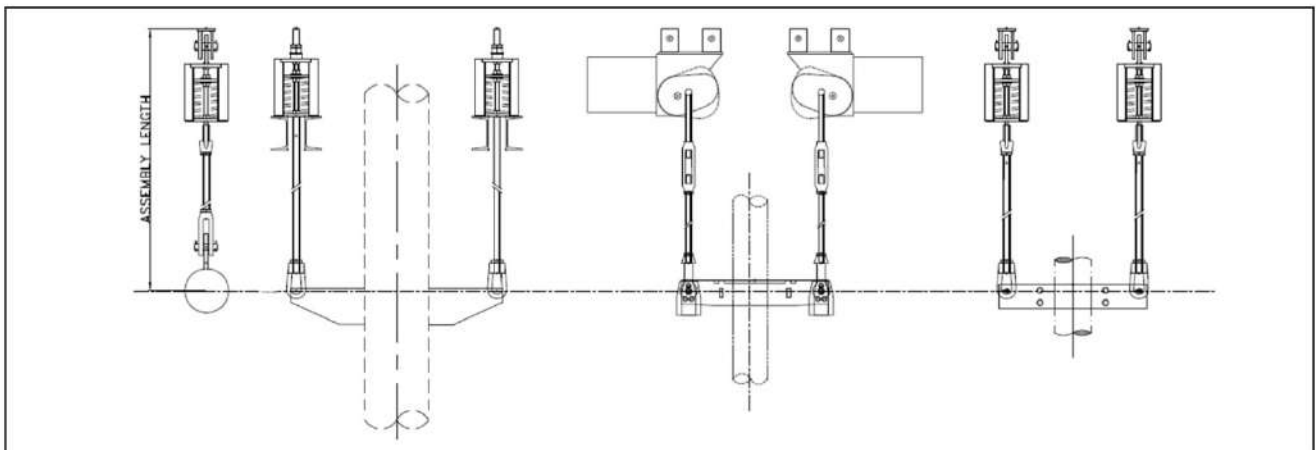
# ORDERING TEMPELATES

# ORDERING INFORMATION

## Ordering Information



- 1) Hot Load (Operating Load) in Kgs : \_\_\_\_\_
- 2) Thermal Movement / Travel (Direction + or -) in mm : UP (+) \_\_\_\_\_ mm
- 3) Type of Hanger Variable / Constant /Rigid : VariableEffort Support
- 4) For Constant Add Over Travel :  Yes  No
- 5) For Variable Springs Max Allowable % Load Variation : \_\_\_\_\_ %
- 6) Horizontal / Lateral Movement (If any) : 'X' Dir \_\_\_\_\_ mm / 'Z' Dir \_\_\_\_\_ mm
- 7) Hydro Load ( If any) : \_\_\_\_\_ Kgs
- 8) Model & Type of Support : \_\_\_\_\_
- 9) Assembly Length (From BOS/TOS to Pipe CL ) : \_\_\_\_\_ mm
- 10) Operating Temperature : \_\_\_\_\_ Deg C
- 11) Pipe Insulation Thk : \_\_\_\_\_ mm
- 12) Pipe Material : \_\_\_\_\_
- 13) Require Pipe Shoe for Foot Mounted Support :  Yes  No
- 14) For Foot Mounted Support Match Height :  Yes  No
- 15) Attachments like Lugs, Cleats Welded to Pipe in Scope :  Yes  No
- 16) Operating Load includes Wt of Accessories like Clamp, Tie Rods, Cleats, Lugs etc. :  Yes  No
- 17) Preferred Surface Protection / Painting : \_\_\_\_\_
- 18) For 'G' Type / Double / Trapeze type Hanger the Load Given above is for 1 assembly consisting of 2 Hangers / Individual Hanger :  Yes  No



# ADDITIONAL FACTORS

## SOME FACTORS REQUIRED FOR PROPER SELECTION OF SUPPORT ITEMS

1. a) Plant is close to the sea Yes  NO   
b) If yes, proximity of the plant from the sea \_\_\_\_\_ Km
  
2. Is the atmosphere corrosive? Yes  NO
  
3. Plant under consideration: (Tick applicable plant)  
a) Power  / Process  / Petrochemical  / Nuclear  / Chemical industry  Others   
b) Is there any corrosive chemical plant nearby? Yes  NO
  
4. What is the preferred surface preparation / paint specification based on recommendation from your consultants for this location  
a) For spring \_\_\_\_\_  
b) Other components \_\_\_\_\_
  
5. Approx ambient temperature in °C of the plant under consideration \_\_\_\_\_ °C
  
6. Storage: It is strongly recommended that all our products are stored in tact under covered roof only even after boxes are opened and awaiting erection. In no case, should it be kept exposed to open atmosphere. Kindly confirm. Yes





**PRIVILEGE**  
— LLC —

**ENGINEERED FOR EFFICIENCY  
BUILT TO LAST!**

Privilege LLC

Sharjah Media City (Shams) FZ  
PO Box 515000, Sharjah, UAE

[contact@privilege-llc.com](mailto:contact@privilege-llc.com)  
[www.privilege-llc.com](http://www.privilege-llc.com)